



Policy Editor

By using the Policy Editor Template in MultiView 2000 you can control access to specific components of the terminal emulator thereby creating a secure terminal emulation environment which can be administered centrally. This can considerably reduce your support burden.

Please note that this technical tip assumes that you are using a Windows NT domain environment.

The M2000 policy file (M2000.adm) is installed by default into

C:\WINNT\INF (if you're using Windows NT)
or C:\WINDOWS\INF (if you're are using Windows 95/98)

Note: in some cases the \inf folders might be hidden so in Explorer make sure Show All Files is enabled. (Select the C drive, go for View, Folder Options, View and check Show all Files under Hidden Files.)

Before attempting any M2000 terminal emulation policies you have to load the Microsoft System Policy Editor and make sure that the three files you need are in the correct location as follows:

C:\WINNT\POLEDIT.EXE
C:\WINDOWS\HELP\POLEDIT.CNT
C:\WINDOWS\HELP\POLEDIT.HLP

- Step 1: Run POLEDIT.EXE from the Start menu or open from within Explorer. You will see a System Policy Editor screen.
- Step 2: Click on Options and select Policy Template – you will now see the current template files.
- Step 3: Click on Add and you will see the M2000.adm file appear. Select Open to add this to the list of current policy templates. You have now made the M2000 template available to the MS Policy Editor.
- Step 4: Choose File, New Policy or click on the New icon from the toolbar. Two icons should appear on the screen – Default Computer and Default User. We recommend that you do not use the default icons but create new M2000 user policies.

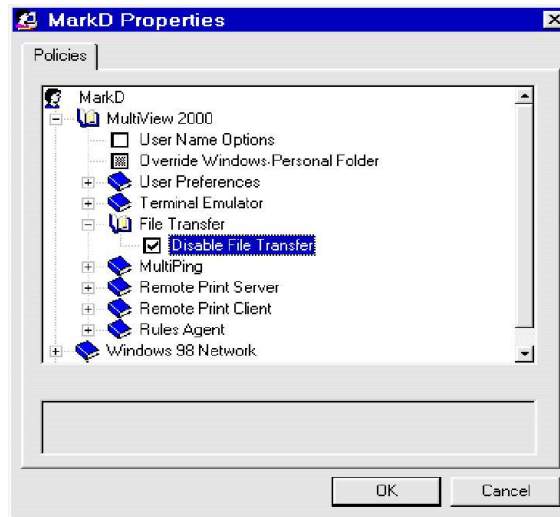
The next steps illustrate how to create a policy for an individual user. Remember you can create policies for individual users, all users, groups of users (e.g. the Marketing Department) and workstations.

- Step 5: Go to the Edit menu and select Add User, enter the user name and click on OK. An icon will be added for the new user.

HOT TIP 1: This name will map on to the Windows login name so make sure it's the same!



Step 6: Double click the new user icon. You will see a list of files. Select M2000 and expand this to show all the MultiView 2000 terminal emulation components.



Each component can be set to one of three states as follows:

Blank	Disabled in the registry
Ticked	Enabled in the registry
Greyed-out	Left at whatever value is already set in the registry

Choose whichever value is appropriate for that particular user. For example if this particular user does not need to be able to carry out File Transfer as part of his/her job you would ensure that the File Transfer component is set as disabled or ticked.

Let's now lock down the M2000 Terminal Emulator so that users can't interfere with the settings you made on installation and configuration:

Step 7: Select and expand Terminal Emulator and then expand Configuration. Enable User Level. You will now be able to select an appropriate value from the pull down list available. For example choosing No Configuration means that there are no configuration capabilities available to this user at all.

HOT TIP 2: If you are setting up a policy template for all users remember that this means you too! To avoid locking yourself out you'll need to create a separate policy for the System Administrator.

Step 8: Once you have set up your new policy go to File and Save. You MUST save this on your Primary Domain Controller (PDC) in:

C:\WINNT\System32\Rep\Import\Scripts\

and the file MUST be called

NTCONFIG.POL (if it is Windows NT file)
CONFIG.POL (if it is a Windows 95/98 file)

Next time the user logs into the domain then the policy will be applied.