



## Advanced Configuration

The M2000 Terminal Emulation configuration file (.zst) contains a number of components:

.zze	Emulation	(contains terminal setup configuration details)
.zsc	Connection Properties	(contains remote host and login details)
.zsr	Rules Agent	(contains Face-lifting details)
.zsp	Pop-up Menu	(contains details of mouse right click button menu)
.zsk	Keyboard Mapping	(contains details of keyboard mappings)
.zsb	Configurable Toolbar	(contains details of buttons on configurable toolbar)

The Emulation settings, Connection Properties and optionally the Script File will be set automatically when the .zst file is created. The other items can be configured as required.

There are two ways of managing the components:

- the default option where all the components are embedded into the .zst file
- the configurations can be saved individually

The following examples illustrate how to embed or save individual components – in this case any keyboard mapping changes. The .zsk file contains script details, possibly to automate logins. .zsk settings are not embedded in the .zst file.

## Embedded Files

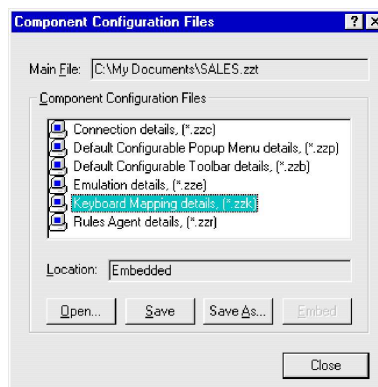
The benefit of this option is that there is a minimum of files to maintain. Apart from a script file each application icon can have all its settings saved in one configuration file.

Step 1: Select the Keyboard Editor button from the M2000 emulation toolbar and make the appropriate changes by re-mapping or programming keys.

You must now save the settings so that they are not just used for this current session.

Step 2: From the File menu select Components. This will show you the Component Configuration Files being used. Select the file you need (in this case Keyboard Mapping details) to check that at this point the Embed button is disabled and the location field is set to 'Embedded'.

Step 3: Go to the emulation Toolbar and click on the Save button or use Save from the File Menu

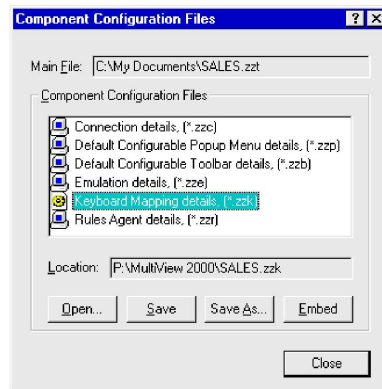


This action automatically saves all new keyboard details into the .zst file.



## Component Files

If M2000 is going to be installed on a number of PCs the benefit of this option is that each configuration file can be used for more than one application. For example, keyboard mappings can be saved in the Keymap file (.zzk). This .zzk file can then be used by many different .zzt files but the keyboard mapping only needs to be done once.



Step 1: As before.

Step 2: From the File menu select Components. Again this will show you the Component Configuration Files being used. Select the file you need but this time choose the Save As button from the Components dialog box. You will now need to enter an appropriate file name and location. By saving the configurations into different component files you also have the choice as to where the files reside. In the above example the .zzt file will use component files located on Drive P which is a network share.

HOT TIP 1: Any subsequent re-mapping also only needs to be configured once.

HOT TIP 2: Saving all configuration files on to a network share can avoid potential support problems as everybody is then using the same correct version of the configuration files.