

Section 9

Printing

Overview

This section describes how to use the printing facilities that are available with MultiView 2000, and how they can be configured.

Contents

- * Printing Remote Information Locally
- * Configuring the Remote Print Server
- * LPD Print Formatting
- * Remote Print Server logging
- * Printing Local Information Remotely
- * Adding a Windows printer
- * Adding a remote printer port

References

The on-line *Help* contains more information on this section.

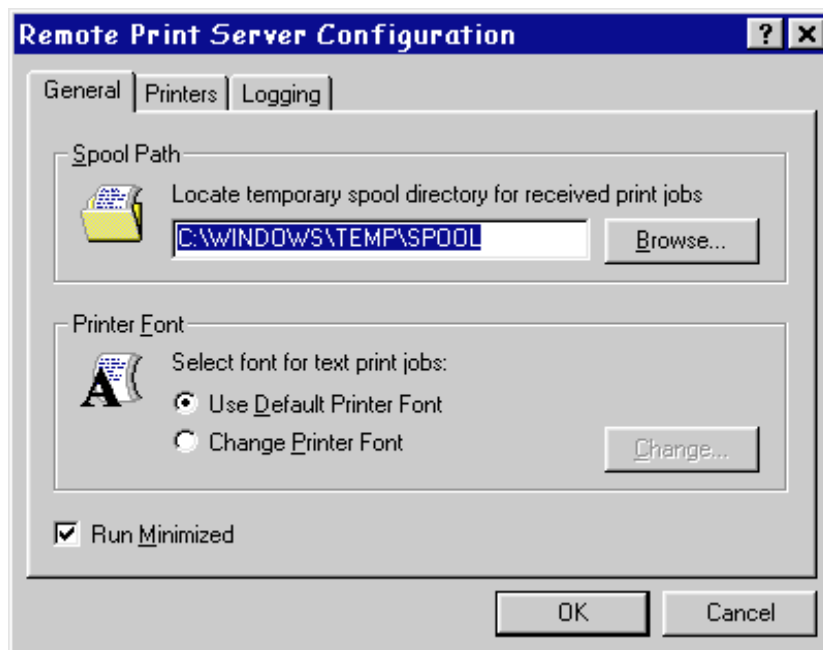
Printing Remote Information Locally

Remote line printing (RLP) is a TCP/IP service which allows systems on a network to print jobs remotely. RLP supports the Line Printer Daemon (LPD). LPD receives the print job then forwards it across the network to the specified Host.

Before any configuring is done within MultiView 2000, LPR/LPD printing needs to be enabled on the Unix host and an LPR printer must be created. Connect a printer to the appropriate port on the PC and configure it within Control Panel, Printers, etc. Once this has been completed an LPD printer can be configured within MultiView.

From the Windows 95 Start Menu, choose the MultiView 2000 Menu, then select the option *Remote Print Server*

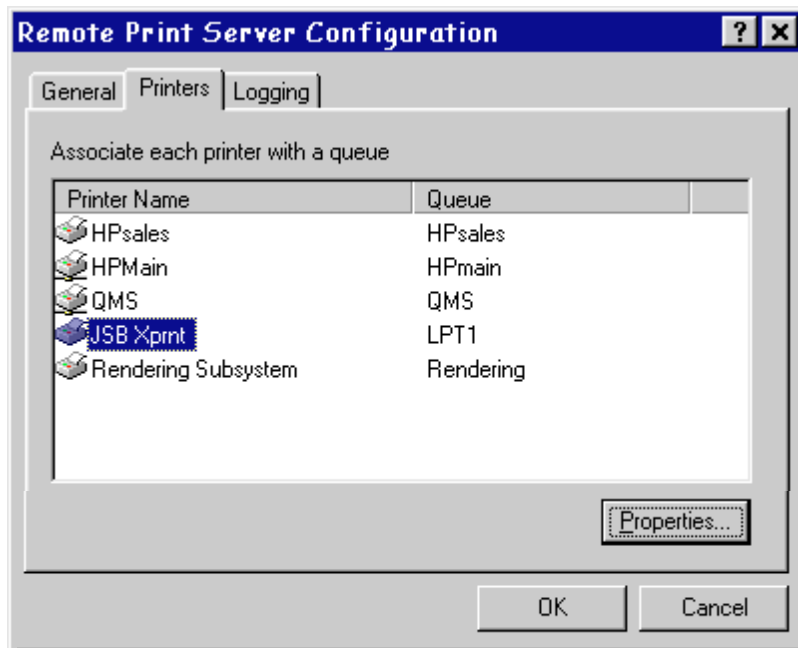
The following dialogue box is displayed.



A directory must be specified where print jobs can be received prior to printing. It is also possible to change the font used when printing text jobs and whether the print server is to be run minimised.

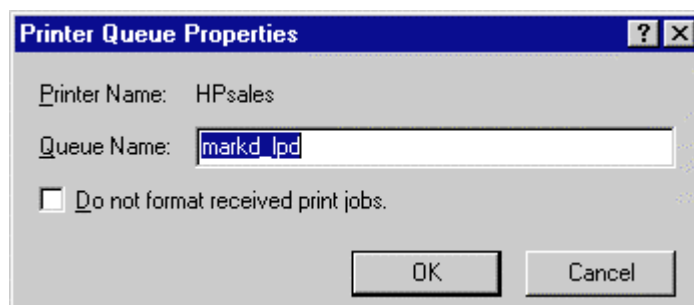
Configuring the Remote Print Server

Click on the *Printers* tab to display a list of printers available to this PC. Select the printer to be used for LPD printing then click *Properties* to enter a queue name.



The following dialogue box is displayed. The Queue Name is the name which is also used by the originating LPR printer.

Check the *Do not format received print jobs* box if you wish to over-ride the print auto-detection facility. (see also, **LPD Print Formatting** later in this section)

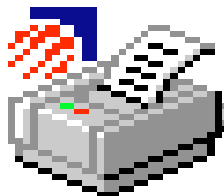


The Remote Print Server configuration is now complete and can be tested accordingly.

Configuring the Remote Print Server

NOTE: The LPD is a daemon and must be running before any print jobs are submitted. As such, it is recommended that the remote print server is added to the *start menu* so that it is always available.

When the LPD daemon is running, the following Icon appears on the Windows status line. Double-clicking this icon will cause the configuration utility to be loaded.

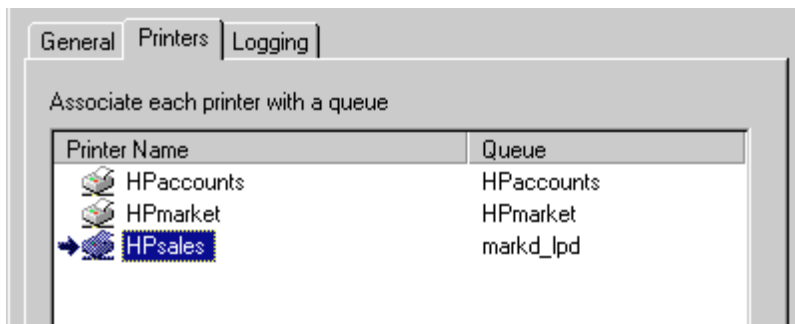


LPD Print Formatting

When a print job is sent to the PC, two files are actually received by the LPD daemon. One is the data file which is to be printed, the other is a control file. The MultiView 2000 print system interrogates this control file to check the format of the incoming data file to see if it requires formatting or simply passing through to the appropriate port.

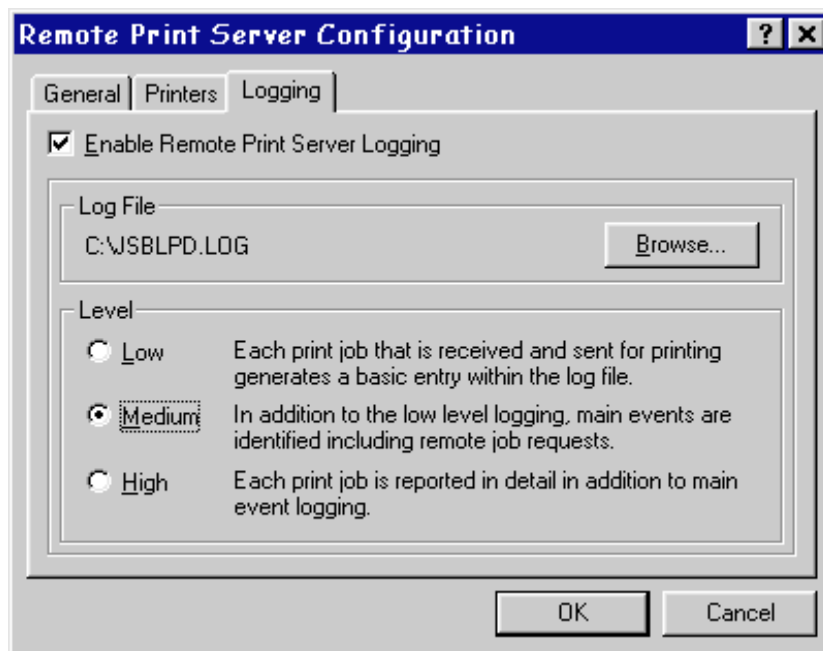
It has been found that some UNIX applications format the print jobs correctly but do not advise the UNIX print system. This means that the information in the control file is incorrect and can lead to the print jobs being double-formatted. It is possible to disable the LPD auto-detection facility by selecting the option for printer queue properties and checking the box *Do not format received print jobs*.

An arrow at the side of the printer shows that print is forwarded directly to the printer port, i.e. no local formatting



Remote Print Server logging

Run the Remote Print Server configuration utility, then click on the *Logging* tab. Select the *Enable* box to turn the logging facility on. Specify the logfile to be used then select the level of logging to be used, either Low (minimum logging), Medium or High (full logging).



The following is a sample of a C:\JSBLPD.LOG logfile with the level set to *High*. It shows details such as, date, time, queue, originator, remote Host, etc.

```

12/12/96 11:33:47 -      Spool Directory, "c:\tmp", was not empty : 1 files deleted
12/12/96 11:33:58 -      RECEIVING  Queue:"qms"
12/12/96 11:34:00 -  JOB  Remote:"MARKDPC.JSB.CO.UK"    User:"MARKD"
                          Printer:"QMS" (PREFORMATTED)
12/12/96 11:34:00 -      JobName:"006" JobID:"0"      File:"c:\tmp\CF000012"
12/12/96 11:34:46 -      RECEIVING  Queue:"qms"
12/12/96 11:34:46 -  JOB  Remote:"JSB.JSB.CO.UK"      User:"ROOT"
                          Printer:"QMS"
12/12/96 11:34:46 -      JobName:"001" JobID:"0"      File:"c:\tmp\CF000013"
12/12/96 11:34:55 -      RECEIVING  Queue:"qms"
12/12/96 11:34:56 -  JOB  Remote:"MARKDPC.JSB.CO.UK"    User:"MARKD"
                          Printer:"QMS" (PREFORMATTED)
12/12/96 11:34:56 -      JobName:"007" JobID:"0"      File:"c:\tmp\CF000014"
12/12/96 11:40:30 -      RECEIVING  Queue:"qms"
12/12/96 11:40:30 -  JOB  Remote:"JSB.JSB.CO.UK"      User:"DAVES"
                          Printer:"QMS"
12/12/96 11:40:30 -      JobName:"002" JobID:"0"      File:"c:\tmp\CF000015"

```

Printing Local Information Remotely

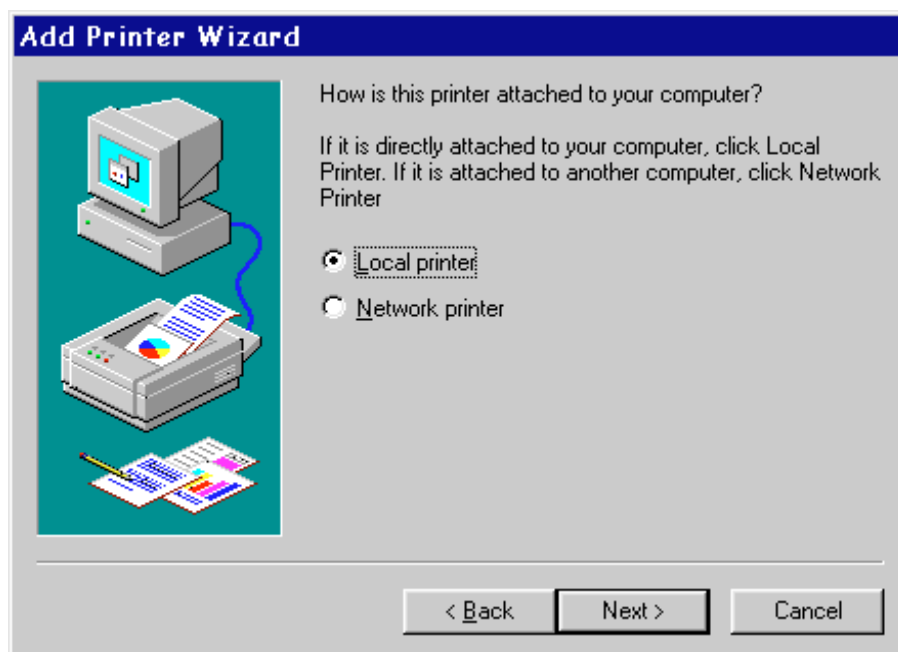
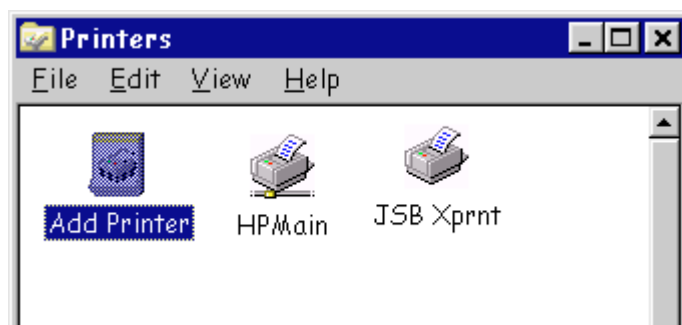
Printing information from local/PC applications to a Remote Unix printer also uses the TCP/IP service of LPR/LPD. In these circumstances MultiView 2000 is generating the LPR print request.

Before any configuring is done within MultiView 2000, LPR/LPD printing needs to be enabled on the Unix host and an LPD printer must be setup and working. Once this has been completed an LPR printer can be configured within MultiView.

A LPR printer is configured in two stages, firstly by adding a Printer to Windows, then by adding a printer port in MultiView 2000.

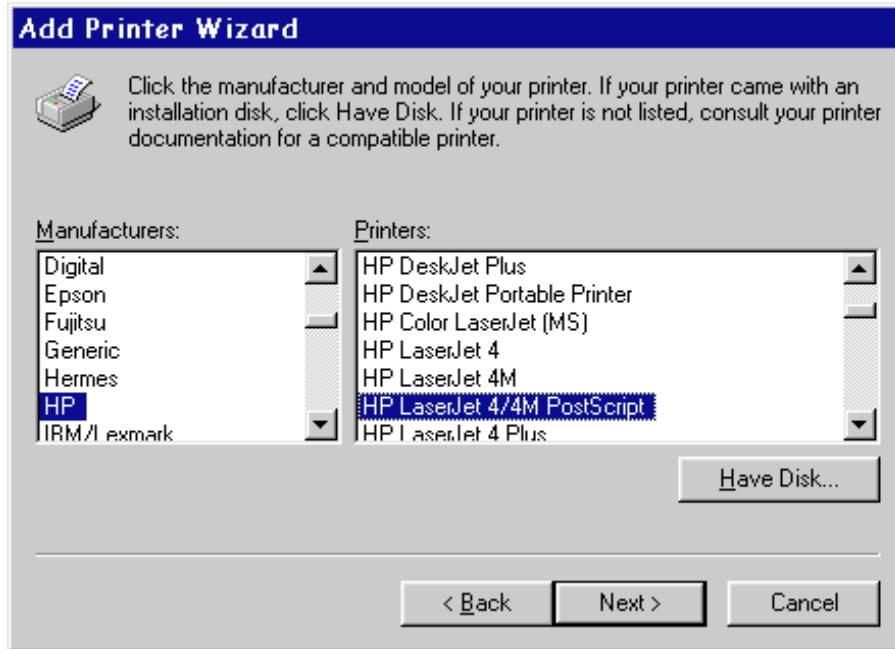
Adding a Windows printer

From the Windows 95 Start Menu, choose *Settings*, then select *Printers*. Then click the *Add Printer* icon to start the add printer wizard.

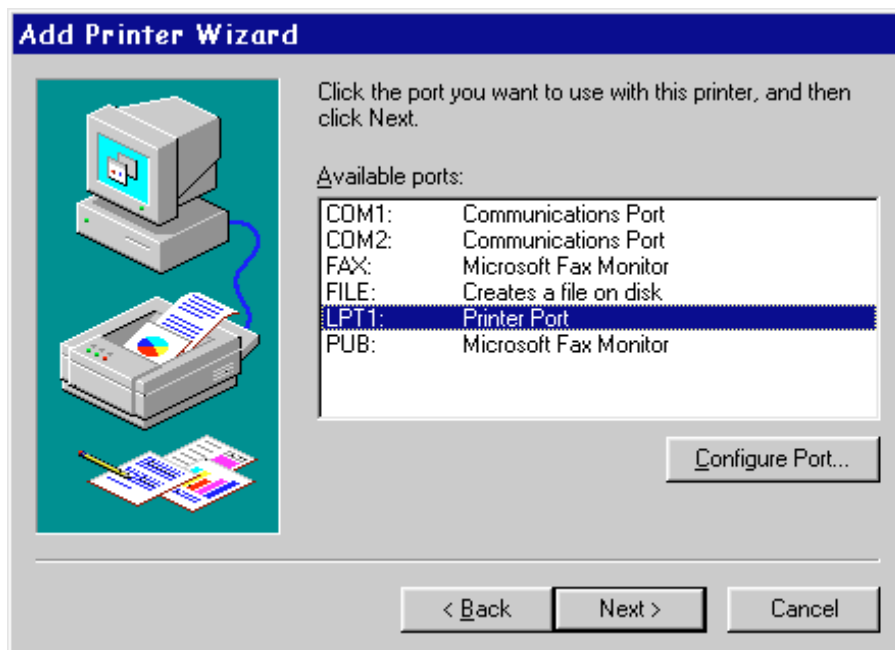


Add Printer Wizard

Select the Manufacturer and model of the printer being used from the list boxes.

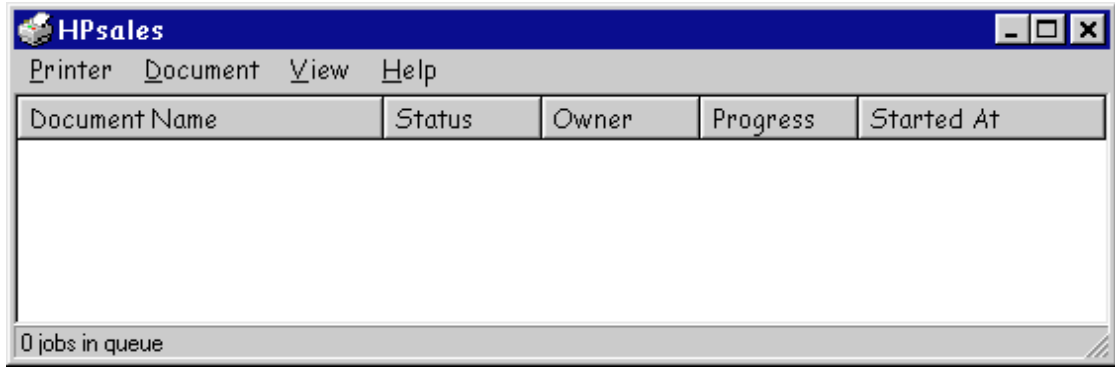


Click on a port to be used from the list of available ports, e.g. LPT1. This is only temporary to allow the Add Printer Wizard to continue and as such does not really matter which port is selected. When prompted, do not send a test print.

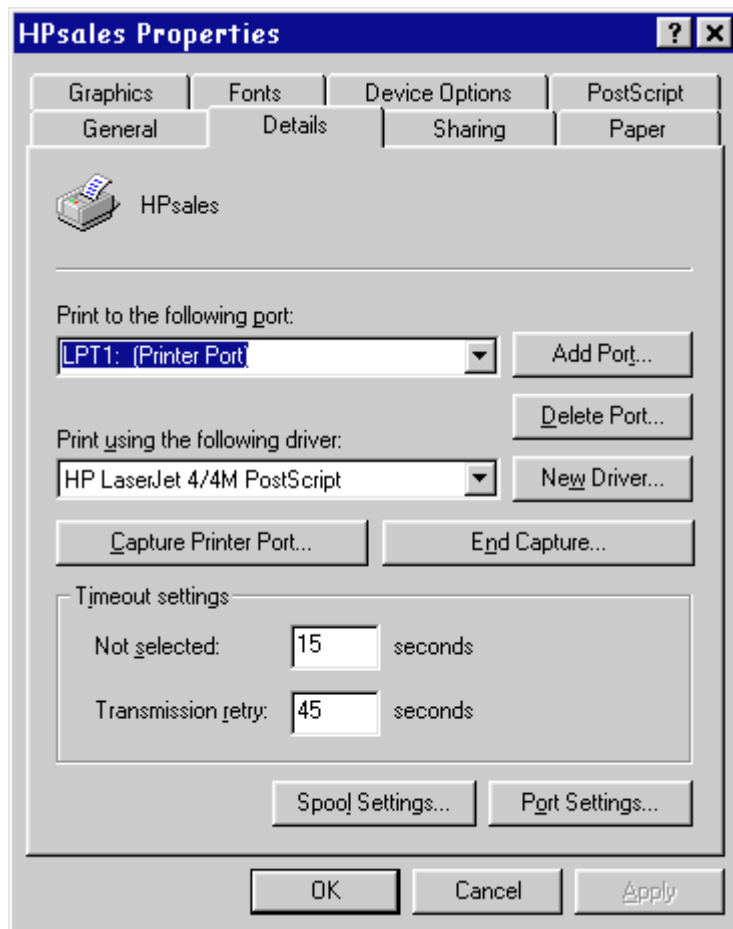


Adding a remote printer port

A status box is displayed for the newly created printer. Now that the Windows printer is created, a remote printer port can be added in MultiView 2000. From the status box, click the *Printer* menu, then select *Properties*

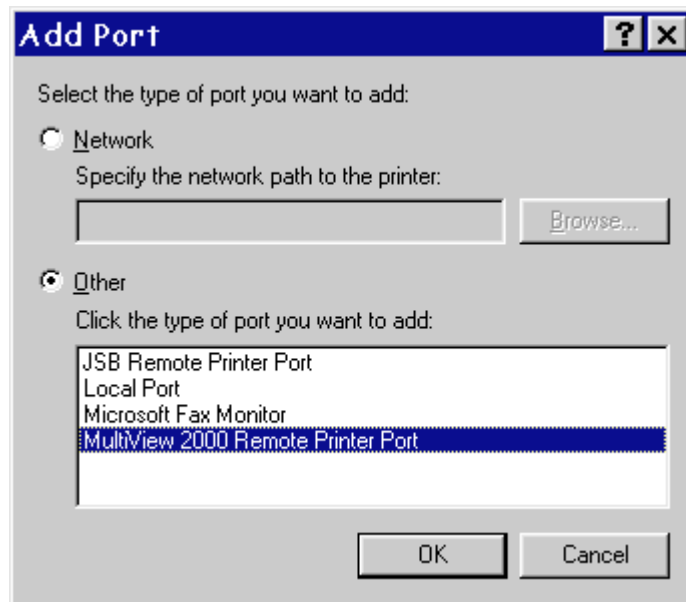


The printer properties dialogue box is now displayed. Click the *Details* tab to show the port options. The port shown should be the one selected earlier during the add printer wizard. It is now necessary to add a remote port. Click *Add port*

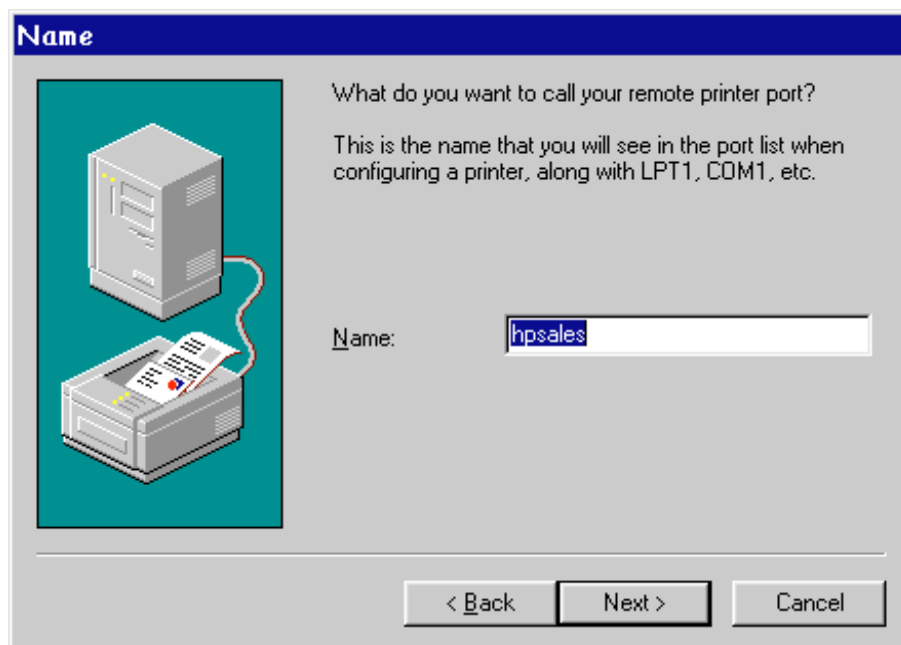


Adding a remote printer port

A box is now displayed prompting for the type of port to be added. Select *Other* and *MultiView 2000 Remote Printer Port*



This starts the MultiView 2000 Remote Print Manager Wizard to add a new remote printer port. Type in the name of the port to do used. This does NOT have to be the same as the queue name of the remote Host though should be something appropriate. Also avoid system type names, e.g. LPT1, printer, etc.



Adding a remote printer port

Enter the name or IP address of the remote host that the printer is connected to.

Remote System

Remote Printer Name: hpsales

Enter the name (or IP address) of the remote system that the printer is connected to, and then click Next.

Remote System:

< Back Next > Cancel

LPR/LPD Configuration; Enter a user name. This must be a valid user name for the remote host. Also enter the queue name. This queue name **MUST** be the same as the name on the remote host, i.e. as it appears in the printcap file.

LPR/LPD Configuration

For LPR/LPD printing, enter your user name on the remote system, and the name of the print queue to which output will be sent.

User:

Queue:

< Back Finish Cancel

The printer is now configured and available to use. Ensure that the local host name appears in the hosts.lpd or equivalent file on the remote host or permission problems will be encountered.