

---

---

# Getting Started with DCS 9

For Users

---

© 1986-2007 by FutureSoft, Inc. All rights reserved.

DynaComm Connectivity Series™ Getting Started with DCS 9 for Users

This manual, and the software described in it, is furnished under a license agreement. Information in this document is subject to change without notice and does not represent a commitment on the part of FutureSoft. FutureSoft assumes no responsibility or liability for any errors or inaccuracies that may appear in this manual.

No part of this manual may be produced or transmitted in any form or by any means, electronic or mechanical, including photocopying and recording, or otherwise, without the prior, written permission of FutureSoft, Inc.

DynaComm, DynaComm Connectivity Series, DynaComm Client Option and FutureSoft are registered trademarks of FutureSoft, Incorporated in the United States and/or other countries. All other trademarks are the property of their respective owners or licensors.

Edition 1—2007 (e1-073107)

Document #E-GSU-DCS9000

Written and designed at:  
FutureSoft, Inc.  
12012 Wickchester Lane, Suite 600  
Houston, Texas 77079-1221 USA

Printed in the USA.  
1.800.989.8908

[info@futuresoft.com](mailto:info@futuresoft.com)

<http://www.futuresoft.com>

---

# Table of Contents

## Chapter 1 Introduction

DCS 9 Features.....	6
Client Option Packages .....	7
New In DCS 9.....	10
Getting Help .....	12

## Chapter 2 Installation

Before You Begin .....	13
Working with the Setup Program.....	14
Single-User Installation .....	15
Licensing DCS 9 and Client Options .....	18
Installation Troubleshooting .....	18

## Chapter 3 Tutorial

Lesson 1: Getting Started.....	20
Lesson 2: DCS 9 Files and Folders .....	21
Lesson 3: DCS 9 Window .....	25
Lesson 4: Working with a Session .....	27
Lesson 5: Transferring Files .....	31
Lesson 6: Printing .....	33

Chapter 4 Removing DCS 9

Removing All Components.....37  
Removing Selected Components.....38

Index ..... 39

---

# Chapter 1

## Introduction

Thank you for choosing the DynaComm Connectivity Series 9—the most powerful terminal emulation product available for Windows. FutureSoft maintains an excellent source of easily accessible information on the World Wide Web. Find answers to your questions, check out new product information, view demonstrations of FutureSoft products, and more at [www.futuresoft.com](http://www.futuresoft.com)

This manual:

- Introduces you to the features and capabilities of the DynaComm Connectivity Series in chapter 1.
- Guides you through installation of a single user copy of the software in chapter 2.
- Demonstrates how to use the basic functions through a tutorial in chapter 3.
- Reviews all removal procedures in chapter 4.

## DCS 9 Features

Standard features in DCS 9 include:

- Full suite of standard emulations

Base product emulations include:

ADDS VP/60  
 AT&T 605/705  
 ANSI-BBS (with SCO ANSI extensions)  
 Digital VT Series (52/100/102/220/320/420)  
 TeleVideo 925/950  
 Wyse 50/60

Additional add-on emulations:

AT&T 4425      TN3270      TN5250  
 HP 700/94      Tandem 6530

- A range of standard connectivity options

Base product connectors include:

Direct Serial  
 Meridian LAT32  
 Modem (TAPI)  
 Telnet (TCP/IP and IPX/SPX)  
 SSH 1  
 SSH 2

Additional connector:

Microsoft SNA Server (with TN3270 Client Option)

- Full suite of standard file transfer protocols

Base product file transfer protocols include:


Kermit              FTP  
 XYModem          ZModem

Additional file transfer protocols:

IND\$FILE (with TN3270 Client Option)  
 IXF (with Tandem 6530 Client Option)

- Drag-and-drop file handling

Load a session, memo, or script by dragging corresponding icon into the DCS application window.

- Euro symbol support   
 Input or display the euro character representing European Union common currency.
- Menu Editor  
 Use the menu editor to customize application-level menus to send a string, launch an application or script.
- OLE-compliant text editor  
 An OLE-compliant text editor is included in the base product. Embed documents from other applications into a memo document.
- Powerful event-driven scripting language  
 An integrated, full-featured script language with over 350 commands and functions that include conditional execution, subroutine execution, event handling, and the creation of custom menus and dialog boxes.
- Toolbar editor  
 Customize application toolbar to create custom toolbar buttons to send a string, launch an application or script, or perform a menu command.
- Y2K Compliant  
 DCS 9 contains no date calculation functions. The only use of dates is through scripting functions that make a call to the Windows operating system and use the date provided by this system. Windows dates are based on a four-character year and, therefore, are not affected by the change of the century.
- WinHLLAPI and EHLLAPI support (TN3270 and TN5250 Client Options only)  
 DCS 9 includes both 32-bit EHLLAPI and 32-bit WinHLLAPI dynamic link libraries to support Microsoft® Windows® applications requiring HLLAPI interfaces. Custom applications can call these libraries directly to interact with TN3270 and TN5250 sessions.

## Client Option Packages

To expand the functionality of DCS 9 to meet specific enterprise requirements, Client Option packages for specific host environments are available. These are add-on emulation products that require installation of the base product before installation of the individual client option. Purchasing an individual emulator allows for supporting a unique computing environment and eliminates the expense of unnecessary emulations.

Each Client Option presents the same graphical interface as the base product to provide for a consistent computing environment. It also supports multiple emulation sessions from within a single instance of the application just as the base product allows.

### AT&T 4425 Client Option

#### ▼ Supported Emulations

- AT&T 4425
- Equivalent AT&T 6539 functionality

#### ▼ Network Connectivity

The AT&T 4425 Client Option supports the following connectors included in the base product:

- Direct Serial
- Modem (TAPI)
- Telnet (TCP/IP and IPX/SPX)

#### ▼ File Transfer Protocols

The AT&T 4425 Client Option supports the following file transfer protocols included in the base product:

- FTP
- Kermit
- XModem
- YModem
- ZModem

## HP 700/94 Client Option

### ▼ Supported Emulations

- HP 700/92
- HP 700/94

### ▼ Product Highlights

- Hotspot support
- Support for downloadable characters and soft fonts
- On screen function keys

### ▼ Network Connectivity

The HP 700/94 Client Option supports the following connectors included in the base product:

- Direct Serial
- Modem (TAPI)
- Telnet (TCP/IP and IPX/SPX)

### ▼ File Transfer Protocols

The HP 700/94 Client Option supports the following file transfer protocols included in the base product:

- FTP
- Kermit
- XModem
- YModem
- ZModem

## Tandem 6530 Client Option

### ▼ Supported Emulation

- Tandem 6530

### ▼ Product Highlights

- EM3270 support
- Block mode type ahead
- Hotspot support

### ▼ Network Connectivity

The Tandem 6530 Client Option supports the following connectors included in the base product:

- Direct Serial
- Modem (TAPI)
- Telnet (TCP/IP and IPX/SPX)

### ▼ File Transfer Protocols

The Tandem 6530 Client Option supports the following file transfer protocols:

- IXF

## TN3270 Client Option

- ▼ Supported Emulations
  - 3278 Models 2 – 5
  - 3279 Models 2 – 5 (with and without extended attributes)
  - 3287 Telnet printing support
  - TN3270E with print
- ▼ Product Highlights
  - EHLLAPI  
(32 bit dynamic link libraries to support Microsoft)
  - WinHLLAPI  
(Windows applications requiring HLLAPI interfaces)
  - Hotspot support
  - LU1/LU3 print
- ▼ Network Connectivity

The TN3270 Client Option supports the following connectors:

  - Microsoft SNA Server with print support
  - Telnet
- ▼ File Transfer Protocols

The TN3270 Client Option supports the following file transfer protocols:

  - IND\$FILE (supports TSO, CICS and CMS)

## TN5250 Client Option

- ▼ Supported Emulations
  - 5250 Models 2 – 5
  - 3812 Telnet printing
  - TN5250E with print
- ▼ Product Highlights
  - EHLLAPI  
(32 bit dynamic link libraries to support Microsoft)
  - WinHLLAPI  
(Windows applications requiring HLLAPI interfaces)
  - Hotspot support
- ▼ Network Connectivity

The TN5250 Client Option supports the following connectors:

  - Telnet
- ▼ File Transfer Protocols

The TN5250 Client Option supports the following file transfer protocols:

  - FTP

## New In DCS 9

### ▼ Certification for Windows Vista™

DCS 9 is certified as an application for the Windows Vista operating system.

### ▼ SSH 1 & SSH 2 connectivity support

SSH 1 & SSH 2 connectors are now available through the New Session wizard or the Session Properties dialog.

### ▼ New file version numbers

In this release DCS 9 and all add-on Client Option files have a product version of 9.0.0.0.

### ▼ Documentation Library Update

The DCS 9 documentation library consists of:

- **Getting Started with DCS 9 for Users (eBook)**  
Designed for the user; includes features overview, installation and configuration procedures and a tutorial covering the major DCS 9 functions.
- **Getting Started with DCS 9 for Administrators (eBook)**  
Designed for the System Administrator; focuses on the use of Web Install and DynaComm Multi-user Administrator functions.
- **Script Language Reference\* (eBook)**  
Technical information for all commands and functions used in the DCS Scripting Language.
- **Release Notes\* (readme.doc)**  
Includes last minute information not included in the documentation as well as important items of particular significance.

- **DCS 9 Online Reference\* (Help system)**

Technical information for DCS 9 features and functions and all Client Options.

- **FSFTP Online Reference\* (Help system)**

Technical information for the FutureSoft 32-bit File Transfer Protocol utility.

- **HLLAPI Auto-Launch Configuration Online Reference\* (Help system)**

Technical information for using HLLAPI calls with third-party applications.

- **Visual Basic Client Online Reference\* (Help system)**

Technical information for Visual Basic Interface functions.

- **Script Language Online Reference\* (Help system)**

Technical information for all commands and functions used in the DCS Scripting Language.

- **DCS 9 Administrator Online Reference\* (Help system)**

Technical information for installation and maintenance of DCS 9; includes DynaComm Multi-user Administrator information.

- **Product Registration & Technical Support Card (print)**

Used to register the DCS 9 product; provides FutureSoft contact information.

\* These items are provided on the installation CD-ROM in the /documentation folder. The most current versions of electronic documentation can be downloaded from [www.futuresoft.com/documentation](http://www.futuresoft.com/documentation).

## Upgrading to DCS 9

All DCS 7.1.0.4 (and earlier) installations must be removed before installing DCS 9. Do not install DCS 9 over an older installation of the DynaComm Connectivity Series.

Do not mix install types. For example, if DCS 9 is installed with the Standard Install method, do not use Web Install to install Client Options - use the Standard Install method to install Client Options.

## Getting Help

When you need help with DCS 9, use one of the following:

### ▼ Release Notes (readme.doc)

Review the readme.doc file before using DCS 9. This document provides last-minute information.

To open the readme.doc file

- 1 On the Start menu, select Programs and then click DynaComm Connectivity Series 9.
- 2 On the DCS 9 menu, click Read Me.

### ▼ Electronic Help

#### • Online References

The Online References contain the most current and complete information about DCS 9 functions and utilities.

To use an Online Reference

- 1 On the Help menu, select Contents to display the Master Help Explorer window.
- 2 In the Explorer pane of the Help window, select an online reference to view in the Contents pane.

To use Context-Sensitive Help

- With a dialog or screen on display, press the F1 key or click the Help button in the dialog.

To use Script Help

- 1 Open a script file with the DCS 9 Script Editor.
- 2 Enter the full name of a command or function.

Do not select any keywords or other parameters.

- 3 Highlight the command or function and press F1.

- eBooks

eBooks are in Adobe Acrobat PDF format and require the Acrobat Reader for display. To download the Acrobat Reader, visit [www.adobe.com](http://www.adobe.com).

- To open, double-click the PDF file name.

- ▼ Help on Help

If you're not familiar with the Windows online Help system and functions, select **Help** from the **Help** menu. This opens the Windows Help file that describes how to use a standard Windows Help system.

- ▼ Documentation Questions or Comments

If you have any questions or comments about DCS 9 documentation, we would like to hear from you. Please contact us via e-mail at [docs@futuresoft.com](mailto:docs@futuresoft.com).

## Product Support

If you don't find the answer in the documentation to your question or problem, registered users of DCS may call FutureSoft Technical Support for assistance. Standard telephone support is available weekdays, 8 a.m. to 5 p.m., Central Standard Time (CST).

Before contacting Technical Support, gather details about your question which should include all hardware and software configurations, the DynaComm version number (found through the **About DynaComm** option on the **Help** menu), any other software loaded (including TSRs) when you experienced the problem, and the exact sequence of steps that preceded the problem.

Phone Number		Fax Number	
US	281.588.6868	US	281.496.1090
UK	+44 (0) 1260 292219	UK	+44 (0) 1260 292224

### E-mail

UK	<a href="mailto:support@futuresoft.com">support@futuresoft.com</a>
US	<a href="mailto:support@futuresoftuk.com">support@futuresoftuk.com</a>

Visit the FutureSoft web site for more information at [www.futuresoft.com](http://www.futuresoft.com)

---

# Chapter 2

## Installation

### Before You Begin

This section details activities to complete before, during and after installation. Read through all information in this section and complete the following activities.

▼ Check system requirements

The minimum requirements for operating DCS 9 on a personal computer are:

- Software

- Windows 95/98

- Windows NT 4.0

- Windows NT, Terminal Server Edition

- Windows 2000

- Windows XP

- Windows 2003 Server

- Windows Vista

- Hardware

- 486 processor

- 10MB hard drive space for a complete installation

- CD-ROM drive

- At least one of the following:

- For direct connections, one free serial port
    - For phone line connections, a modem
    - For network connectivity, a network interface card

▼ Remove previous versions of DCS

To upgrade from version 7.0 (or earlier) of DCS, remove any prior version before installing DCS 9. If you are not sure which version of DCS is installed,

select **About DynaComm** from the **Help** menu to display product version information.

Files created after DCS 7.0 is installed, such as session files and scripts, are not removed during the uninstall process. These files can be stored elsewhere during the installation procedure.

▼ Backup the installation media

You are licensed to create up to three backup copies of DCS 9 installation media. Create at least one backup copy and use it for installation.

▼ Locate the product serial number

During the installation process, you will be required to enter a valid product serial number. The serial number is located on the installation media and your product registration card.

▼ Register DCS 9

Send in the enclosed postage-paid registration card by mail or fax.

12012 Wickchester  
Suite 600  
Houston, TX 77079  
Fax: 281.496.1090

▼ Close applications

Before starting the installation program, quit any running applications to ensure a smoother installation process.

## Working with the Setup Program

The Setup Program guides you through the installation of DCS 9. Setup uses two basic functions: Starting and Exiting.

Before starting the Setup Program, be sure that you have reviewed all the material in the Single User section in this chapter. That section provides background information for the responses required for the Setup Program.

Working with the Setup Program includes:

Step 1: Start the Setup program.

More than one method can be used to start the Setup Program.

Step 2: Respond to Setup screens to install appropriate components.

The Setup Program presents a series of screens that require a response for each. Details for each screen are provided in the following chapters.

### Starting Setup

The Setup Program is started through the:

- ▼ FutureSoft Connectivity Products menu
- ▼ Windows Run dialog
- ▼ Add/Remove Programs selection in Windows Control Panel.

### CD Autorun

If CD Autorun is enabled on the install machine, the FutureSoft Connectivity Products menu appears when you insert the installation CD-ROM in the appropriate drive.

In addition to installing the software, the FutureSoft Connectivity Products menu offers other choices for viewing documentation or other items on the CD-ROM.

### Windows Run Dialog

If CD Autorun is disabled, the Setup program can be started from the Windows Run dialog.

- ▼ To start the Setup Program from the Windows Run dialog:
  - 1 Place the installation CD-ROM in the appropriate drive.
  - 2 On the Windows taskbar, click **Start** and then select **Run**.
  - 3 In the Run dialog, enter the CD-ROM drive name followed with "setup.exe".
  - 4 Click **OK**.

### Windows Control Panel

The Setup Program can also be started from the Add/Remove Programs selection in the Control Panel window.

- ▼ To start the Setup Program from the Windows Control Panel:
  - 1 On the Windows taskbar, click **Start**.
  - 2 Highlight **Settings** and select **Control Panel**.
  - 3 Double-click **Add/Remove Programs**.
  - 4 In the **Add/Remove Programs Properties** dialog, click **Install**.
  - 5 Place the installation CD-ROM in the appropriate drive.
  - 6 In the **Run Installation Program** dialog, click **Next**.

## Welcome Dialog

The InstallShield Wizard dialog appears to indicate the status of the installation program load. When Setup initialization is complete the **Welcome** screen appears. Setup is ready to begin installation of DCS 9.

## Exiting Setup

During the installation process, if you click **Cancel** on any screen, the **Exit Setup** dialog appears.

- ▼ To respond to this screen, click either:
  - **Yes** to stop the installation and exit the Setup Program.
  - **No** to return to the previous screen and continue with Setup.

## Single-User Installation

After completing pre-installation activities, follow the steps below to set up an individual copy of DCS 9. These steps use the standard install method for installing from a CD-ROM.

Some steps may ask to enter information or to make a choice. Read the descriptions carefully before completing the step. Most steps do allow you to return to the previous screen to make changes, if necessary. However, copying of DCS 9 files begins when you click **Next** on the **Select Usage** screen. To make corrections at this point, you will need to remove DCS 9 and reinstall.

### Step 1: Start the Setup Program

Start the installation program using one of the techniques discussed in Chapter 2 Setup Program.

### Step 2: Respond to Setup dialogs

#### Setup Dialog 1: Welcome

The **Welcome** message indicates that the Setup program is now ready to begin installation of DCS 9 and reminds you to quit any running applications. It also includes the copyright warning.

To respond to this dialog

- ▼ Choose one of the following:
  - **Next** to continue with the installation.
  - **Cancel** to exit Setup.

## Setup Dialog 2: Software License Agreement

Installation and use of DCS 9 is governed by the terms of the online license agreement. Make sure you read and agree to the terms of the agreement before installing DCS 9.

If you have any questions about the terms of the online license agreement, please contact your FutureSoft account manager or send e-mail to [info@futuresoft.com](mailto:info@futuresoft.com).

To respond to this dialog

- 1 Choose to accept/not accept the license agreement terms.
- 2 Choose one of the following:
  - **Back** to return to the **Welcome** dialog.
  - **Next** to continue with the installation.
  - **Cancel** to exit Setup.

## Setup Dialog 3: Customer Information

The Customer information identifies you to DCS 9. You must complete both entries to continue the installation.

To respond to this dialog

- 1 Enter the following:
  - Your full name in **User Name**.
  - Your company name in **Organization**.
- 2 Choose one of the following:
  - **Back** to return to the **Software License Agreement** dialog.
  - **Next** to continue with the installation, or
  - **Cancel** to exit Setup.

## Setup Dialog 4: Select Setup Type

Four options are presented for installing components and sub-components of DCS 9:

- ▼ **Complete**
- ▼ **Custom**

See the first page of this chapter for a description of each option.

To respond to this dialog

- 1 Select one setup option.
- 2 Choose one of the following:
  - **Back** to return to the **Choose Destination Location** dialog.
  - **Next** to continue with the installation.
  - **Cancel** to exit Setup.

### Optional Setup Dialog: Custom Setup

When the Custom setup type is chosen, the next dialog shown is Custom Setup.

All components of the base product and all Client Options are shown. Each component displays the local hard drive icon which means that it will be installed on the local hard drive. To change how, or if, the component is installed, click on the down arrow on the hard drive icon and select from one of the available options.

Selecting a component hard drive icon displays space requirements for the selected component in the Feature Description group. To see space requirements for all selected components, click **Space** to display the **Disk Space Requirements** dialog. This dialog lists the available space on the selected drive and the space requirements for the selected DCS components. Highlighted volumes indicate that space requirements for DCS are greater than the available space. Click **OK** to return to the Custom Setup dialog.

On the Custom Setup dialog, **Install** to displays the location where DCS files will be installed. The default location is the C:\Program Files\FutureSoft\DCSeries folder. Use **Change...** to modify this location, if needed.

To respond to this dialog

- 1 Change components and sub-components as needed.
- 2 Choose one of the following
  - **Back** to return to the **Select Setup Type** dialog.
  - **Next** to continue with the installation.
  - **Cancel** to exit Setup.

### Setup Dialog 5: Ready to Install the Program

The Ready to Install the Program dialog allows you to return to previous screens to make any last minute changes.

To respond to this dialog

- ▼ Choose one of the following
  - **Back** to return to the **Select Setup Type** dialog.
  - **Install** to continue with the installation.
  - **Cancel** to exit Setup.

### Setup Dialog : InstallShield Wizard Completed

The InstallShield Wizard Completed dialog is the last dialog displayed in the installation of DCS 9. Two options are provided:

To respond to this dialog

- ▼ Click **Finish** to complete the installation.

Installation of DCS 9 is complete.

## Licensing DCS 9 and Client Options

If you installed an evaluation version of DCS 9 or would like to activate a Client Option, the Licenser utility applies the valid serial number that you received when the product was purchased. The Licenser utility is started from the DynaComm Connectivity Series 9 program group.

To apply a valid serial number

- 1 On the Windows taskbar, click **Start** and highlight **Programs**.
- 2 Highlight **DynaComm Connectivity Series 9** and click **Licenser**.  
The FutureSoft Licenser dialog appears.
- 3 Enter the serial number in the provided box and click **License**.  
The DynaComm Connectivity Series dialog appears.
- 4 In the **User Information** group, do the following:
  - a In **User name**, enter a complete user name.
  - b In **Organization**, enter a complete organization or group name.
- 5 Click **OK**.  
A confirmation dialog appears.
- 6 Click **OK**.  
A question dialog appears.
- 7 Do one of the following:
  - Click **No** to end the licensing function.
  - Click **Yes** to repeat steps 3 through 6.

Optionally, the Licenser utility can be run from a command line or in a batch file. The command takes the form of:

```
licenser /L #####
```

where “#” represents the base product or Client Option serial number.

**Note:** Licensing on Windows Vista systems requires Administrator access rights.

## Installation Troubleshooting

If you encounter an error while installing DCS 9, one of the following common installation problems may have occurred:

- **General file transfer error**  
The Setup program was unable to copy the files to your destination directory. Make sure you have permission to write to or modify the specified destination directory.
- **Error reading disk drive**  
Make sure the CD drive is in proper working order. Try reading another CD in the same drive.  
Make sure you have inserted the installation CD correctly in the disk drive – the label should be face up.  
If the drive is functioning and the media is properly inserted, the disk may be defective. If you are installing from a backup copy, install from the original media instead. If you are installing from the original media, please contact your FutureSoft Account Manager for a replacement.
- **Installation has detected a previous version of the DynaComm Connectivity Series**  
DCS 9 cannot be installed over a previous version of DCS. You must remove the previous version first, then install DCS 9.

---

# Chapter 3

## Tutorial

This chapter presents the five basic functions of DCS 9 in a tutorial. Begin with the first topic, Getting Started, and work through each topic in the order presented. Each topic builds on the information presented in the previous topic(s) and assumes you have completed all prior topic(s).

The topics are arranged to give you a progressive overview of the most commonly used functions. The topics covered in this tutorial are:

- ▼ Lesson 1: Getting Started
  - Reviews methods for starting the DCS 9 application.
- ▼ Lesson 2: DCS 9 Files & Folders
  - Describes files and folder structure used by DCS 9.
- ▼ Lesson 3: DCS 9 Window
  - Describes the DCS 9 application window components.
- ▼ Lesson 4: Working with a Terminal Session
  - Reviews procedures for creating, saving and opening terminal sessions.
- ▼ Lesson 5: Transferring Files
  - Discusses the process and procedures for moving files to and from a host to a local terminal.
- ▼ Lesson 6: Printing
  - Reviews all print commands and options.

## Lesson 1: Getting Started

This first lesson:

- ▼ Describes the DCS 9 program group.
- ▼ Presents methods for starting DCS 9.
- ▼ Lists steps to open DCS files.

### DynaComm Connectivity Series 9 Program Group

The DynaComm Connectivity Series 9 program group is created during the installation process. It is added to the Programs section of the Windows Start menu.

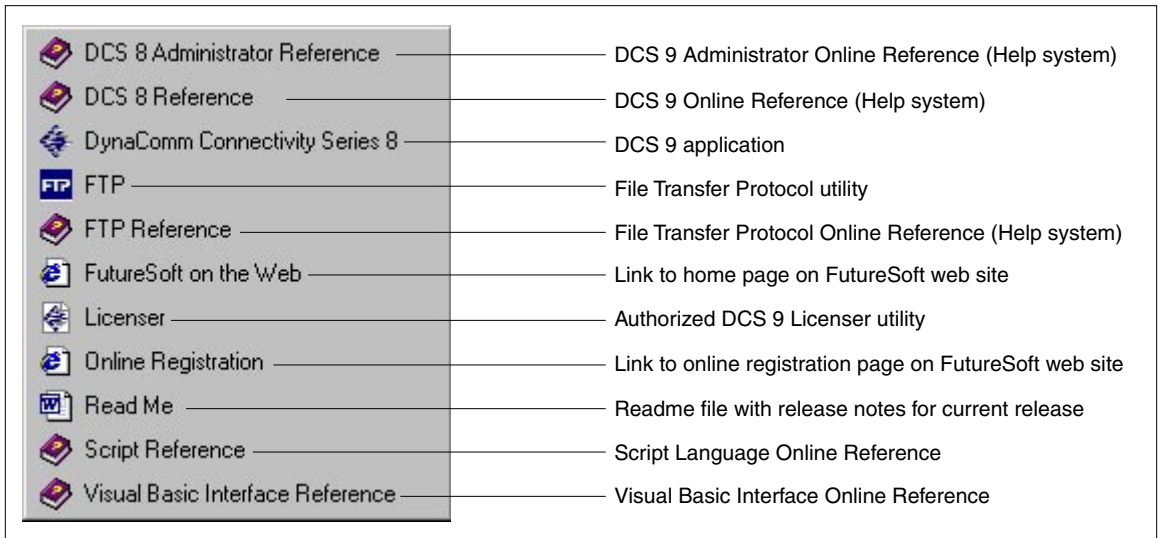


Figure 3.1

DynaComm Connectivity Series 9 Program Group.

### Starting DCS 9

- ▼ To start DCS 9 from an icon
  - On the Windows desktop, double-click the icon associated with DCS 9.
- ▼ To start DCS 9 from the Start menu
  - 1 On the Windows taskbar, click **Start** and highlight **Programs**.
  - 2 On the Programs submenu, highlight **DynaComm Connectivity Series 9** and click **DynaComm Connectivity Series 9**.
- ▼ To start DCS 9 from a browser window
  - 1 Start the Internet browser.
  - 2 In **Address**, enter the full path of the DCS 9 application file location press **Enter**.
- ▼ To start DCS 9 from a command line
  - 1 On the Windows taskbar, click **Start** and select **Run**.
  - 2 In the Run dialog, enter `dcseries` and click **OK**.

## Lesson 2: DCS 9 Files and Folders

This second lesson:

- ▼ Presents all installed DCS 9 folders and describes the files stored in each.
- ▼ Lists each file type and the file name extension.

### Folders

When DCS 9 is installed, several folders are created to hold files used by the program. Figure 3.2 lists all folders created in a DCS 9 installation with a description of the files stored in each. Note that VBClient has several subfolders.



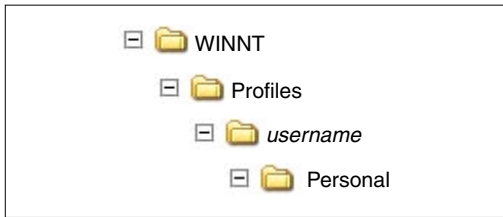
Figure 3.2  
DynaComm Connectivity Series 9 folders and files.

The default location for install folders is:

c:\Program Files\FutureSoft\DCSeries

Depending on the operating system, selected folders are also created in a second location:

▼ Windows NT



▼ Windows 2000 Professional

Windows 2000 Server

Windows XP

Windows 2003 Server



All folders, except VBClient, can be moved and redirected through the File Locations tab of the Options dialog. However, we recommend that “default” folders remain in their original install location to ensure function integrity.

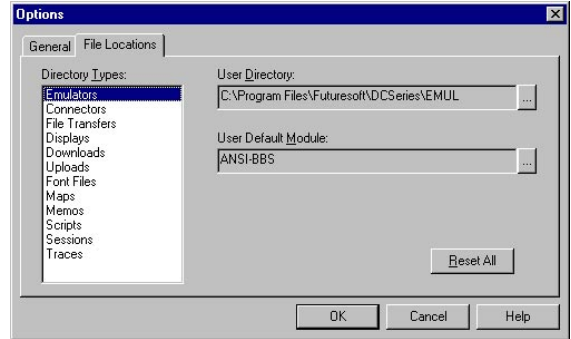


Figure 3.3  
File Locations tab of Options dialog.

## Files and File Types

When DCS 9 is installed, eight (8) file types are placed in the install folders. Each file type has a specific function within DCS 9.

- ▼ Document files are opened and edited in DCS 9. These files can be associated with an icon placed on the desktop. Double-clicking on the file name or the associated icon starts DCS 9 and opens the file.

FutureSoft File Type	File Extension
Memo document	*.dcm
Script document	*.dcp
Session document	*.ses

- ▼ When a script document (.dcp) is compiled, a compiled script file (.dct) is created. These files are run or executed inside DCS 9 and can be associated with an icon. Double-clicking the file name or associated icon starts DCS 9 and runs the script.

FutureSoft File Type	File Extension
Script file (compiled script)	*.dct

- ▼ Program support files have extensions of .acm, .kbm and .trc. These files are loaded by DCS 9 when a session file is opened. These files are not opened directly in DCS 9 or in any other application.

FutureSoft File Type	File Extension
Attribute Map file	*.acm
Keyboard Map file	*.kbm
Trace Facility file	*.trc

- ▼ Session properties for emulations, connectors and file transfer protocols are stored in application files with an extension of .flx. These files are used by DCS 9 and are not opened directly.

FutureSoft File Type	File Extension
Emulation object file	*.flx
Connector object file	*.flx
File Transfer object file	*.flx

## Opening Files

- ▼ To open a session file (\*.ses), script document (\*.dcp) or memo document (\*.mem) from the desktop
  - Double-click an icon associated with the corresponding file or document.
- ▼ To open a session file, script document or memo document from a command line
  - 1 On the Windows taskbar, click **Start** and select **Run**.
  - 2 In the Run dialog, enter "*filename.ext*" and click **OK**.

Where:

*filename* is a fully qualified path and name of the session file, script document or memo document to open when DCS 9 starts.

*.ext* is the corresponding file extension.

**Note:** The opening and closing quotation marks must be included.
- ▼ To open a session file in DCS 9
  - 1 On the **File** menu, highlight **Open** and click **Session**.
  - 2 In the **Open** dialog, select a session file and click **Open**.
- ▼ To open a script document in DCS 9
  - 1 On the **File** menu, highlight **Open** and click **Script**.
  - 2 In the **Open** dialog, select a script document and click **Open**.
- ▼ To open a memo document in DCS 9
  - 1 On the **File** menu, highlight **Open** and click **Memo**.
  - 2 In the **Open** dialog, select a memo document and click **Open**.

## Starting a Script

- ▼ To start a compiled script (\*.dct) from the desktop
  - Double-click an icon associated with a compiled script file.
- ▼ To start a compiled script (\*.dct) file from a command line
  - 1 On the Windows taskbar, click **Start** and select **Run**.
  - 2 In the Run dialog, enter "*script.dct*" and click **OK**.

Where:

*script* is a fully qualified path and name of the script file to execute when DCS 9 starts.

**Note:** The opening and closing quotation marks must be included.

**Tip:** Use **Browse** to select the file to open.
- ▼ To start a compiled script (\*.dct) file in DCS 9
  - 1 On the **Script** menu, click **Run**.
  - 2 In the **Select a script file to execute** dialog, select a compiled script file and click **Open**.

## Lesson 3: DCS 9 Window

This third lesson

- ▼ Reviews major elements of the DCS 9 window.
- ▼ Describes all toolbar buttons

### Window Elements

The DCS 9 application window presents standard interface tools that you may have used with other Windows applications. Figure 3.4 identifies common elements of the DCS 9 application window.

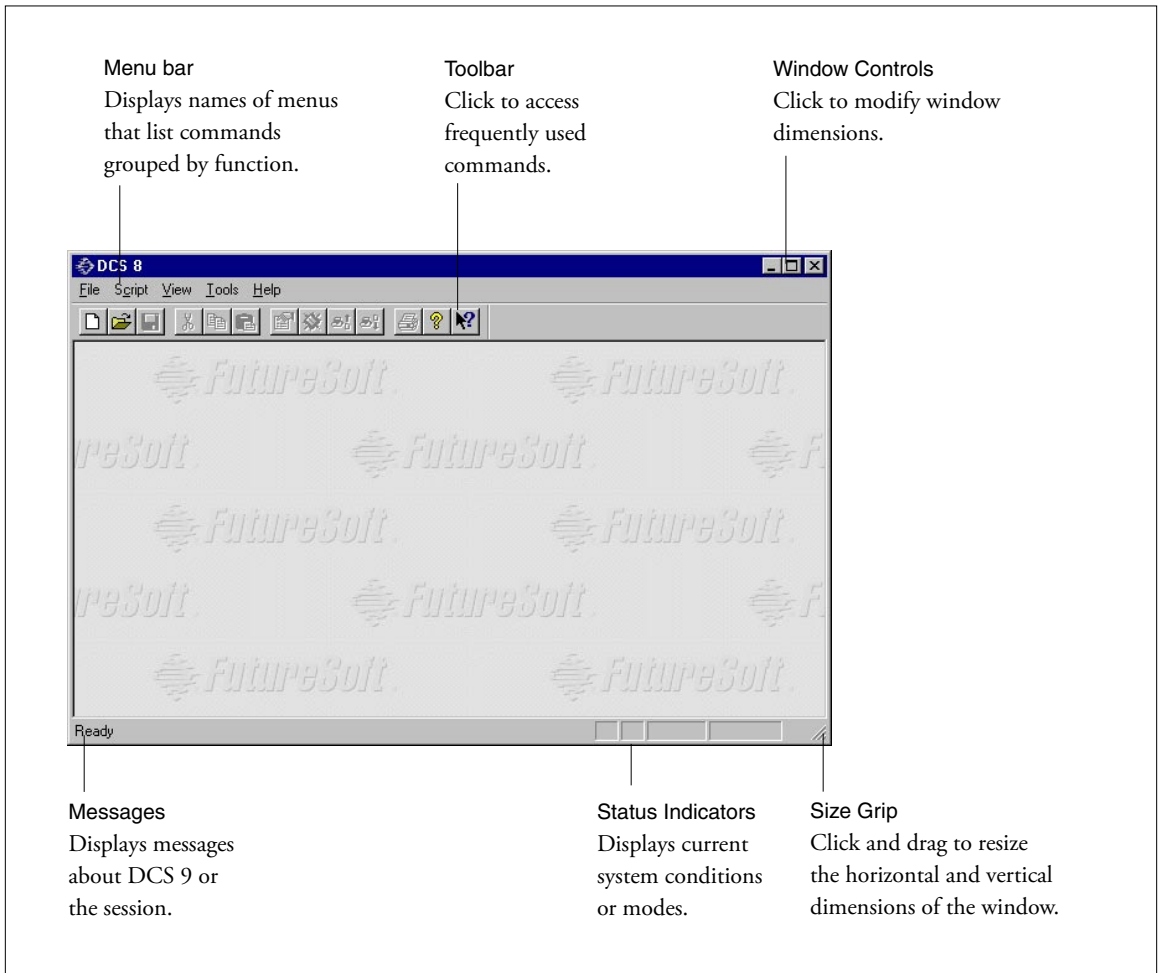


Figure 3.4  
DynaComm Connectivity Series 9 Window.

## Toolbar

The standard DCS 9 toolbar provides 13 quick-access buttons for frequently used functions. Each button has a menu equivalent.














Tool	Tooltip	Description
	New	Starts New Session wizard or opens last document type opened
	Open	Displays File Open dialog
	Save	Saves active session properties
	Cut	Places copy of highlighted text on clipboard and removes text from the display
	Copy	Places copy of highlighted text on clipboard
	Paste	Places copy of clipboard contents in display at cursor position
	Session Properties	Displays Session Properties dialog for the active session
	Connect/Disconnect	Toggles active session connection status with host specified in session properties
	Send File	Displays Send File dialog to start transfer of file from local system to remote host (upload)
	Receive File	Displays Receive File dialog to start transfer of file from a remote host to local system (download)
	Print	Prints contents of active window
	About	Displays About DynaComm dialog
	What's This	Activates What's This? help feature

Table 3.1

Toolbar quick-access buttons.

## Lesson 4: Working with a Session

This fourth lesson

- ▼ Outlines steps to create a session.
- ▼ Reviews changing session properties.
- ▼ Saves a session and opens a saved session.
- ▼ Works with multiple session windows.

### Creating a Terminal Session

A terminal session includes, at a minimum:

- ▼ An Emulator
- ▼ A Connector

A file transfer protocol can be selected but is not required.

By default the New Session Wizard is enabled when DCS 9 is installed. The New Session Wizard guides you through the process of selecting the minimum requirements for creating a session.

The New Session Wizard is disabled by clearing the Use 'New Session' Wizard option on the General tab of the Options dialog (Tools > Options).

If the New Session Wizard is disabled or no selections are made, DCS 9 automatically includes the following session properties:

- ▼ ANSI-BBS emulation
- ▼ Telnet connector
- ▼ ZModem file transfer protocol

Session properties are changed through the Session Properties dialog.

**Note:** Default session properties may be changed by your system administrator.

The following steps to create a terminal session use the New Session Wizard. If the wizard is disabled, continue to step 5 after completing step 1.

#### Step 1: Access the New Session Command

- ▼ To create a new session, do one of the following
  - Click the New Session toolbar button.
  - On the File menu, highlight New and click Session.

The New Session wizard starts and displays the New Session Wizard - Emulator Type dialog appears (see Figure 3.6).

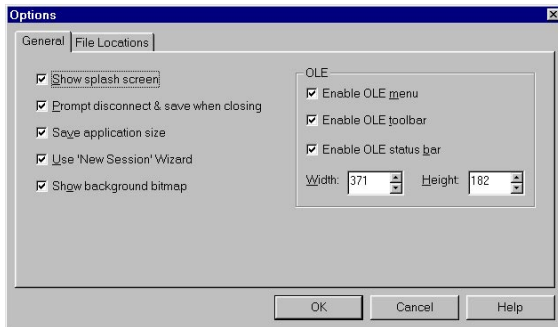


Figure 3.5  
General tab of Options dialog.

### Step 2: Select an Emulation

The New Session Wizard - Emulator Type dialog lists all installed emulations.

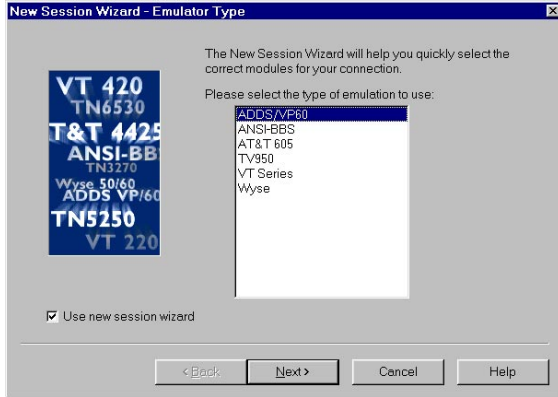


Figure 3.6  
New Session Wizard -  
Emulator Type dialog.

To respond to this dialog

- Select an emulation and click Next.

The New Session Wizard - Connector Type dialog appears.

### Step 3: Select a Connector

The New Session Wizard - Connector Type dialog lists all installed connectors.

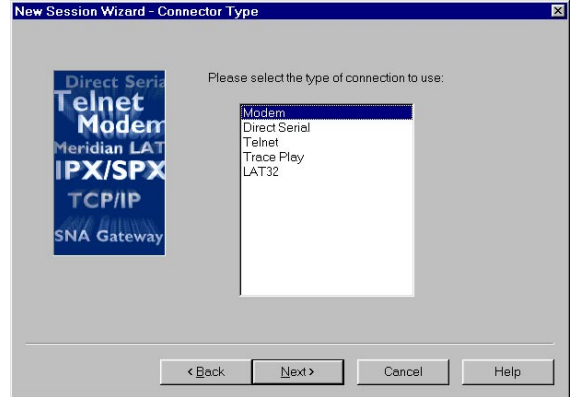


Figure 3.7  
New Session Wizard -  
Connector Type dialog.

To respond to this dialog

- Select a connector and click Next.

The New Session Wizard - File Transfer Type dialog appears.

### Step 4: Select a File Transfer Protocol

The New Session Wizard - File Transfer Type dialog lists all installed file transfer protocols except for FutureSoft FTP.

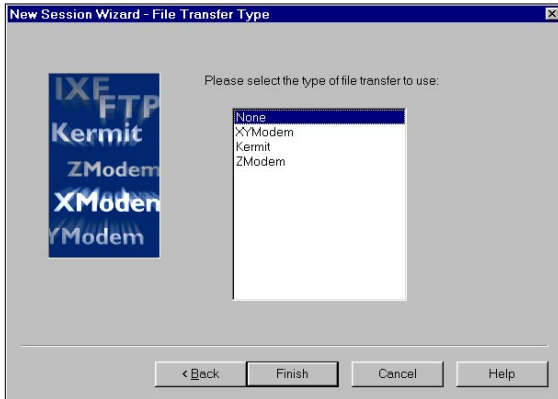


Figure 3.8  
New Session Wizard -  
File Transfer Type dialog.

This protocol is provided as a standalone FTP utility which can be started from the DCS 9 window with the Tools > FTP command or on its own, as described at the end of Lesson 5.

To select a file transfer protocol

- Select a file transfer protocol and click Finish.

The Session Properties dialog appears.

### Step 5: Make Session Property Changes

The Session Properties dialog appears each time a new session is created. The Connectors tab is displayed.

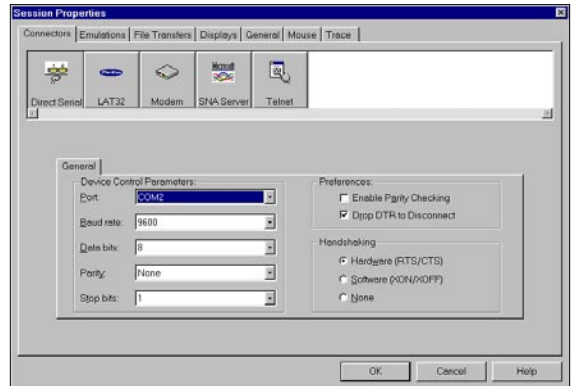


Figure 3.9  
Connectors tab of the Ses-  
sion Properties dialog.

To complete session configuration, you must specify a:

- ▼ Network host, if Telnet connection is used.
- ▼ Serial communication port, if direct serial connection is used.
- ▼ Phone number, if modem connection is used.

To respond to this dialog

- 1 Supply the required corresponding connection information.
- 2 Click OK.

The connection is made and a session window opens.

## Step 6: Saving the Session

The configured session properties are valid only for the current instance of the session. To retain the configured session properties, you must save the session.

To save a session with the default session file name

- 1 On the **File** menu, click **Save** or **Save As**.

The default session file name appears in **File Name** in the **Save As** dialog.

- 2 Click **Save**.

To save a session with a custom session file name

- 1 On the **File** menu, click **Save As**.

The default session file name appears in **File Name** in the **Save As** dialog.

- 2 In **File Name**, enter a new file name and click **Save**.

## Step 7: Opening a Saved Session

Saved session files are stored in the **Session** folder.

To open a saved session

- 1 On the toolbar, click **Open**.
- 2 Select a session file and click **Open**.

## Working with Multiple Windows

DCS 9 is designed with a Windows Multiple Document Interface (MDI). Multiple session files, scripts, or memo documents can be open in a single instance of DCS 9.

Use the **Windows** menu to view a list of all open windows. A check mark appears next to the *active* window. Click a window in the list to make it the active window. Multiple windows can be arranged to fit the application workspace.

To arrange multiple windows

- 1 On the application menu bar, select **Windows**.
- 2 On the **Window** menu, select the desired windows arrangement.
  - **Cascade** arranges the windows in an overlapping stack of equal sized windows such that the title bar of each window is visible.
  - **Tile Horizontally** arranges the windows in equal horizontal widths that fill the application window.
  - **Tile Vertically** arranges the windows in equal vertical widths that fill the application window.

## Lesson 5: Transferring Files

This fifth lesson :

- ▼ Reviews selecting a file transfer protocol.
- ▼ Outlines steps to send files (upload) to a host.
- ▼ Outlines steps to receive files (download) from a host.
- ▼ Describes the FutureSoft FTP utility.

### File Transfer Protocols

When creating a new session, only installed file transfer protocols appear in the **Session Properties** dialog. The file transfer protocol can be changed at any time. However, changing protocols automatically disconnects and then re-connects the session to the host. Therefore, to ensure data transfer integrity, do not change the protocol during a file transfer. Stop the current transfer first, change the protocol, and then reinitiate the transfer.

To select or change a file transfer protocol

- 1 On the **Session** menu, select **Properties**.
- 2 In the **Session Properties** dialog, click the **File Transfers** tab.
- 3 Select a file transfer protocol button.
- 4 Click **OK** to close the **Session Properties** dialog.

### Sending Files (Upload)

After a connection to a host has been established, the **Send File** and **Receive File** commands are enabled. DCS 9 can transfer files to any host that supports the configured transfer protocol. To transfer a file to a host, the host system or application must be readied to receive a file.

**Note:** Within DCS 9, the configuration requirements for sending a file to a host will vary by host, host application, and the file transfer protocol. The default file transfer protocol settings can be changed to suit your particular host or host application.

To send a file to a host

- 1 Configure the host or host application to receive a file.
- 2 On the toolbar, click **Send File**.
- 3 In the **Send File** dialog, specify the file(s) to transfer.

If changes to the file transfer protocol configuration are needed for this transfer only, click **Setup** and make the changes in the **Session Properties** dialog.

- 4 Click **OK** to start the transfer.

The **File Transfer Status** dialog appears to show the progress of the file transfer.

## Receiving Files (Download)

After a connection to a host has been established, the **Receive File** command is enabled. To receive a file, the host system or application must be readied to send a file. Check with your system administrator or consult the host application documentation if you need assistance configuring the host to send a file.

**Note:** Within DCS 9, the configuration requirements for sending a file to a host will vary by host, host application, and the file transfer protocol. The default file transfer protocol settings can be changed to suit your particular host or host application.

To receive a file from a host

- 1 Configure the host or host application to send a file(s).

**Note:** By default, when a host sends a **Receive** command to start a file transfer, ZModem autostarts. This option may be turned off. See the Online Reference for more information.

If ZModem autostarts the transfer, the file name is sent in the first packet.

- 2 On the toolbar, click **Receive File**.
- 3 In the **Receive File** dialog, specify the file(s) to transfer.

If changes to the file transfer protocol configuration are needed for this transfer only, click **Setup** and make the changes in the **Session Properties** dialog.

- 4 Click **OK** to start the transfer.

The **File Transfer Status** dialog appears to show the progress of the file transfer.

## FSFTP utility

DCS 9 ships with a standalone File Transfer Protocol (FSFTP) utility. The FSFTP utility supports file transfers to and from a host using the FTP protocol over a TCP/IP connection.

FSFTP installs in the installation directory of DCS 9. The DynaComm Connectivity Series 9 program group provides a shortcut to start FSFTP outside of DCS 9. If you have started DCS 9, access FSFTP with the **Tools > FTP** command.

An Online Reference (Help system) for FSFTP is provided with the utility.

## Lesson 6: Printing

DCS 9 offers a range of local printing options, including:

- ▼ Printing the current screen
- ▼ Printing a selected area
- ▼ Printing the entire contents of a session
- ▼ Allowing the host system to send raw data directly to your local printer
- ▼ Printing using a specific font, and adding header and footer information to each page

Before printing, a printer must be installed and configured. The printer can be a local or network resource.

### Printer configuration

Although you must install local printer drivers using the Windows Add/Remove Hardware wizard, you have the option of configuring an installed printer without closing DCS 9.

- ▼ To configure a printer
  - 1 On the File menu, select Print Setup.
  - 2 In the Print Setup dialog, select a printer.
  - 3 Click Properties and configure the printer as needed.

**Note:** Changes to printer properties are temporary and affect only the current print job. They are not saved with the session, script, or memo file and have no effect on print jobs for other windows or applications.

- 4 Do one of the following:
  - Click OK to accept the print setup
  - Click Cancel to discard changes.

**Note:** Local printing options do not affect output printed to a host or remote system.

### Print Setup Options (Session Only)

For individual print jobs, a specific printer, font, and header and footer elements can be specified using the Print Setup dialog. The File > Print Setup command displays this dialog. Print setup for memo and scripts use the Windows Print Setup dialog.

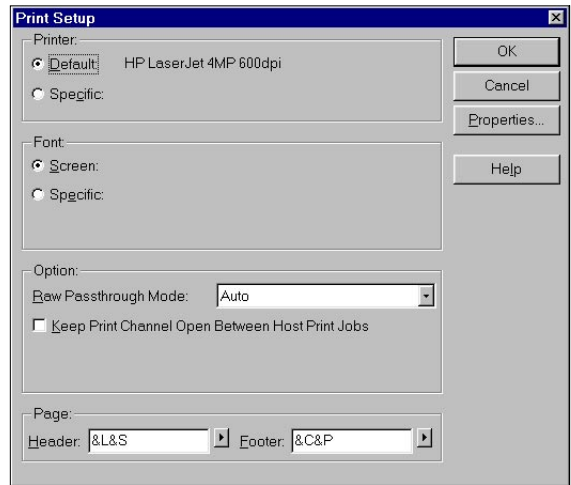


Figure 3.10  
Print Setup dialog.

- ▼ To configure an individual print job
  - 1 On the File menu, select Print Setup.
  - 2 In the Print Setup dialog, select a printer.
  - 3 Select a font.
  - 4 Use the default settings for Raw Passthrough Mode. If you wish to use a different setting, see the Online Reference for more information.
  - 5 Select the right arrow buttons next to the Header and Footer fields to add information at the top and bottom, respectively, of each printed page.
  - 6 Click OK to accept the print job configuration, or click Cancel to discard any changes.

**Note:** Local printing options do not affect print output to a host or remote system.

## Print Preview

Before sending a job to a printer, print results can be viewed online. Options include viewing pages either side-by-side or one at a time, in two levels of magnification.

- ▼ To preview a print job
  - 1 Display the item to be printed in the active window by selecting the corresponding *window title* from the **Window** menu.
 

*Window title* is the name of the session, script, or memo to be printed.
  - 2 On the **File** menu, select **Print Preview**.
 

The Print Viewer window replaces the session, script, or memo window. By default the Print Viewer displays one page at a time for multiple page previews.
  - 3 Select the functions on the Print Viewer toolbar as needed.
 

Tip: Each window provides its own print preview. Therefore, two or more print previews can be compared side-by-side by selecting a tiling option from the **Window** menu.



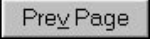



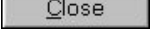
Use This Button	To . . .
	Sends the job to the printer and closes the Print Viewer window.
	Displays the succeeding page in a multiple page print preview.
	Displays the prior page in a multiple page print preview.
	Creates a simple print view display of two consecutive pages.
	Enlarges the page size in the print Viewer window.
	Reduces the page size in the Print Viewer window.
	Closes the Print Viewer.

Table 3.2  
Print Viewer functions.

## Printing a Session Window, Script or Memo Document

The Print dialog is used to make changes to a print job.

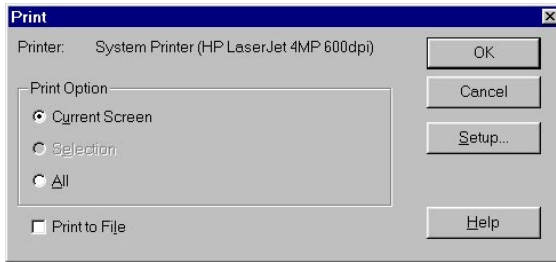


Figure 3.11  
Print dialog.

- ▼ To print from an open session window
  - 1 Display the item to print in the active window by selecting the corresponding *window title* from the **Window** menu.  
*Window title* is the name of the session, script, or memo to be printed.
  - 2 On the **File** menu, select **Print**.  
The Print dialog appears.  
**Note:** Open sessions that have not been configured or have not attempted a connection appear as an empty window. These windows cannot be printed.
  - 3 Select a print option.
  - 4 Click **OK**.

## Printing to a File

Print output can be redirected to a file. The contents of the file is raw print data that can be viewed with any text editor (such as NotePad). However, to print the file in a format other than raw data, it must be sent to a printer that uses a Printer Control Language (PCL) print driver.

- ▼ To send the file to a printer for output
  - 1 Enter the following at a DOS command prompt

```
copy filename.ext LPTx /B
```

where:

*filename* is the fully qualified path and name of the file (such as c:\sales\june99.prn)

*.ext* is the file extension (usually .prn)

*x* is the LPT port number (such as LPT1)

*/B* indicates that the file is a binary file

- 2 Press **Enter**.



---

# Chapter 4

## Removing DCS 9

### Removing All Components

The uninstall utility removes only those items installed by the Setup program. It does not remove session files, scripts, memo documents, custom keyboard maps, or any other file not installed by Setup. Also, it does not remove an installed file that has been renamed. Removing the base DCS 9 program also removes all Client Options.

#### Step 1: Start the Setup Program

Start the Setup Program using one of the techniques discussed in Chapter 2 Setup Program.

#### Step 2: Respond to Setup Dialogs

##### Setup Dialog 1: Welcome

The Welcome dialog appears when the Setup Program has completed loading.

To respond to this dialog

- Click Next.

##### Setup Dialog 2: Program Maintenance

The Program Maintenance dialog offers three options. The Remove option removes all program components, including Client Options, of DCS 9.

To respond to this dialog

- Select Remove.
- Click Next to start the removal.

##### Setup Dialog 3: Remove The Program

The Remove the Program dialog appears to confirm the removal.

- Click Remove to start the removal.

##### Setup Dialog 4: Maintenance Complete

The Maintenance Complete dialog appears when the removal is complete.

To respond to this dialog

- Click Finish to close the Setup Program.

## Removing Selected Components

The Setup program can remove selected components and/or sub-components of DCS 9. When the **Custom Setup** dialog appears, all installed components are listed.

### Step 1: Start the Setup Program

Start the Setup Program using one of the techniques discussed in Chapter 2 Setup Program.

### Step 2: Respond to Setup Dialogs

#### Setup Dialog 1: Welcome

The **Welcome** dialog appears when the Setup Program has completed loading.

To respond to this dialog

- Click **Next**.

#### Setup Dialog 2: Program Maintenance

The **Modify** option allows for removal of selected program components.

To respond to this dialog

- Select **Modify**.
- Click **Next** to start the removal.

#### Setup Dialog 3: Custom Setup

- ▼ To remove a component,
  - 1 Select the item.
  - 2 On the pop-up menu, select “This feature will not be available”.
  - 3 Choose one of the following
    - **Back** to return to the **Select Setup Type** dialog.
    - **Next** to continue with the removal.
    - **Cancel** to exit Setup.

#### Setup Dialog 4: Ready to Modify the Program

The **Ready to Modify the Program** dialog appears to confirm the removal.

- Click **Install** to start the removal.

#### Setup Complete

The **InstallShield Wizard Completed** dialog appears when the removal is complete.

To respond to this dialog

- Click **Finish** to close the Setup Program.

---

# Index

## A

- About command 26
- administrator 10
- ANSI-BBS emulation 6, 27
- AT&T 4425 Client Option 6
- AT&T 6539 emulation 7
- attribute map files 23
- Autorun, CD 14
- autostart 32

## B

- backups 13
- base product 6
- browser 20

## C

- CD Autorun 14
- Client Options
  - AT&T 4425 7
  - HP 700/94 8
  - Tandem 6530 8
  - TN3270 9
  - TN5250 9
- command line 10, 20
- components
  - removing 37
- configuration, printer 33
- connectors
  - AT&T 4425 7
  - base product 6
  - default 27
  - direct serial 6, 7, 8, 29
  - HP 700/94 8
  - installed 28
  - modem 7, 8, 29
  - Tandem 6530 8
  - Telnet 8, 27, 29
  - TN3270 6

- Connect command 26
- contact 12–13, 13
- Control Panel, Windows 14
- Copy command 26
- corrections, install 15
- Custom setup type 17
- Cut command 26

## D

- date calculation 6
- DCS 8
  - base product 6
  - Client Options, add-on 7–9
  - files and folders 21
  - installing 15–21
  - removing 37–38, 37–40
  - starting 20–21
- DEC. *See* Digital VT Series emulation
- dialogs
  - Maintenance Complete 37
  - New Session Wizard, Connector Type 28
  - New Session Wizard, Emulator Type 28
  - New Session Wizard, File Transfer Type 29
  - Options, File Locations tab 22
  - Options, General tab 27
  - Print 35
  - Print Setup 33
  - Select Components 38
  - Select Setup Type 16
  - Session Properties, Connectors tab 29
  - Setup Complete 38
  - Setup Maintenance 37
  - Software License Agreement 16
  - User Information 16
  - Welcome 15
  - Welcome (Setup Maintenance) 38
- Digital VT Series emulation 6
- direct serial connector 6, 7, 8
- Disconnect command 26
- display files 21

documentation library 10  
 documents  
   memo 23  
   script 23  
   session 23  
 download files 21, 26, 32

## E

e-mail 12, 16  
 eBooks 10–12  
 editor 6  
 EHLLAPI 6  
 EM3270 support 8  
 emulations  
   add-on 6  
   ANSI-BBS 27  
   base product 6  
   default 27  
   HP 700/92 8  
   installed 28  
   Tandem 6530 8  
   TN3270 9  
   TN5250 9  
 errors, installation 18  
 euro symbol 6  
 evaluation version 18  
 extensions, file types 23

## F

files 21  
   Attribute Map 23  
   connector 23  
   copying 15  
   display 21  
   emulation 23  
   file transfer 21, 23  
   font 21  
   Keyboard Map 23  
   opening 24  
   Readme 10, 11, 20  
   receiving (download) 32  
   sending (upload) 21, 31  
   session 21  
   Trace Facility 23  
   transferring 21, 26, 31–32  
 file transfer 18

file transfer protocols  
   default 27  
   installed 29, 31–32  
 file transfer protocols, supported  
   AT&T 4425 7  
   base product 6  
   HP 700/94 8  
   Tandem 6530 6, 8  
   TN3270 6, 9  
   TN5250 9  
 file types 23  
 file version 10  
 folders 21  
 font  
   files 21  
   used in printing 33  
 FSFTP utility 20  
 FTP protocol 7, 8

## H

help, finding & using 11  
 HLLAPI Auto-Launch Configurator utility 10  
 HLLAPI Interface 9  
 host application 31, 32  
 hotspot support 8, 9  
 HP 700/94 Client Option 6, 8

## I

icon 20  
 IND\$FILE protocol 6, 9  
 installation 13–18  
   single user 15–22  
   steps 14  
   troubleshooting 18  
 install requirements 7  
 IXF protocol 6

## K

Kermit protocol 7, 8  
 Keyboard Map files 23

## L

licensed copy 18  
 Licenser utility 18, 20

## M

Maintenance Complete dialog 37  
media, installation 13  
Meridian LAT32 connector 6  
Microsoft SNA Server connector 6  
Modem connector 6, 7, 8  
Multiple Document Interface (MDI), Windows 30

## N

New command 26  
New Session Wizard 27–30  
    Connector Type dialog 28  
    Emulator Type dialog 28  
    File Transfer Type dialog 29  
NotePad, Windows 35

## O

OLE 6  
Online Reference(s) 10–11, 20  
Open command 26  
Options dialog  
    File Locations tab 22  
    General tab 27

## P

Paste command 26  
printer configuration 33  
printing 26, 33–35  
    to a file 35  
Print command 26  
Print dialog 35  
Print Setup dialog 33  
Print Viewer 34  
program group 18  
program group, DCS 8 20  
properties, session 31–32  
protocols, file transfer 7, 8, 27

## R

Raw Passthrough Mode 33  
Readme file 10, 11, 20  
Receive File command 26  
registration 20  
    card 10, 13  
Release Notes 10, 11, 20  
requirements, system 13

## S

Save command 26  
script(s)  
    compiling 23  
    documents 23, 24  
    files 23, 24  
    starting 24  
scripting language 6, 10, 20  
Select Components dialog 38  
Select Setup Type dialog 16  
Send File command 26  
serial number 13, 18  
session  
    connection status 26  
    creating 27–30  
    files 21  
    open 30, 35  
    printing 33  
    properties 26, 27, 29, 31–32  
    saving 30  
Session Properties command 26  
Session Properties dialog 29  
Setup Complete dialog 38  
Setup Program 14–16, 15, 37, 38  
SNA Server (Microsoft) connector 6  
Software License Agreement dialog 16  
soft fonts 8  
space available 17  
space required 17  
Standard Install 11  
support, technical 12  
system requirements 13

## T

- Tandem 6530 Client Option 6, 8
- Technical Support 12
- TeleVideo 925/950 emulation 6
- Telnet connector 6, 7, 8, 27
- TN3270 Client Option 6, 9
- TN5250 Client Option 6, 9
- toolbars 25, 26, 34
- Trace Facility files 23
- transferring files 26
- troubleshooting 18
- tutorial 19–42

## U

- upgrading 11, 13
- upload files 21, 26, 31
- User Information dialog 16–20
- utilities
  - FSFTP 20
  - Licenser 18, 20

## V

- version
  - documentation 10
  - file 10
  - product 12, 13, 18
- Visual Basic Interface 20

## W

- Web Install 11
- web site 10, 20, ii
- Welcome (Setup Maintenance) dialog 37, 38
- Welcome dialog 15
- What's This command 26
- window
  - active 30
  - DCS 8 25
  - empty 35
  - multiple 30
  - Print Viewer 34
- WinHLLAPI 6
- wizard, New Session 27–30
- Wyse 50/60 emulation 6

## X

- XModem protocol 7, 8

## Y

- Y2K 6
- YModem protocol 7, 8

## Z

- ZModem protocol 7, 8, 27, 32